

# Prescription and Instructions for Radiographing Both Knees

**Stephen M. Howell, M.D.**  
8120 Timberlake Way Suite 112,  
Sacramento CA 95823  
Office: 916.689.7370  
Fax: 916.688.5610

## **Advanced Imaging Center**

1031 S. Fairmont Avenue  
Lodi, Ca 95240  
T: 209.333.8343

## **Sutter Imaging Roseville Parkway**

1640 E. Roseville Parkway Suite 100  
Roseville, Ca 95661  
T: 916.784.2277 F: 916.784.2670

## **Sutter Imaging Fort Sutter**

2801 K Street Suite 110  
Sacramento, Ca 95816  
T: 916.733.5051 F: 916.733.8753

## **Sutter Imaging Davis**

2020 Sutter Place  
Davis, Ca 95616  
T: 530.747.5030 F: 530.747.5031

## **Sutter Imaging Auburn Faith**

11815 Education Street  
Auburn, Ca 95602  
T: 530.888.4535 F: 530.887.8255

## **Sutter Imaging Vacaville**

770 Mason Street  
Vacaville, Ca 95688  
T: 707.427.4900 F: 707.454.5922

## **Sutter Imaging Lincoln**

685 Twelve Bridges Drive Suite A  
Lincoln, Ca 95648  
T: 916.408.5448 F: 916.408.5454

## **Sutter Imaging Folsom I**

1655 Creekside Drive  
Folsom, Ca 95630  
T: 916.984.0739 F: 916.784.2670

## **Sutter Imaging Carmichael**

6620 Coyle Avenue Suite 100  
Carmichael, Ca 95608  
T: 916.961.4910 F: 916.784.2670

## **Sutter Imaging Alhambra**

1201 Alhambra Blvd. Suite 140  
Sacramento, Ca 95816  
T: 916.731.7782 F: 916.731.7781

## **Sutter Imaging Folsom II**

1661 Creekside Drive  
Folsom, Ca 95630  
T: 916.984.0739 F: 784.2670

## **Sutter Imaging Greenback**

5767 Greenback Lane  
Sacramento, Ca 95841  
T: 916.865.1079 F: 916.865.1085

## **Sutter Imaging Elk Grove**

8170 Laguna Blvd. Suite 112  
Elk Grove, Ca 95758  
T: 916.691.5922 F: 916.865.1491

## **Sutter Imaging Sacramento**

3161 L Street  
Sacramento, Ca 95816  
T: 916.453.9999 F: 916.784.2670

## **Sutter Imaging Vallejo**

100 Hospital Drive  
Vallejo, Ca 94589  
T: 707.427.4900 F: 707.551.3612

## **Sutter Imaging Rancho Cordova**

11121 Sun Center Drive Suite A  
Rancho Cordova, Ca 95670  
T: 916.861.8304 F: 916.862.7910

## **Sutter Imaging Campus Commons**

2 Scripps Drive Suite 110  
Sacramento, Ca 95825  
T: 916.929.3393 F: 916.784.2670

## **Sutter Imaging Woodland**

475 Pioneer Ave, Suite 100  
Woodland, Ca 95776  
T: 530.406.5616 F: 530.406.5618

## **Sutter Imaging Amador**

100 Mission Blvd  
Jackson, Ca 95642  
T: 209.223.7560 F: 209.223.7548

## **Sutter Imaging South**

8118 Timberlake Way Suit 110  
Sacramento, Ca 95823  
T: 916.681.8852 F: 916.784.2670

## **Sutter Imaging Yuba City**

440 Plumas Blvd  
Yuba City, Ca 95991  
T: 530.749.3301 F: 530.749.3496

## **Sutter Imaging Fairfield**

2700 Low Court  
Fairfield, Ca 94534  
T: 707.432.2500 F: 707.432.2599

## **Sutter Imaging Capital Pavilion**

2725 Capital Ave Suite 104/106  
Sacramento, Ca 95816  
T: 916.262.9522 F: 916.865.1491

## **Sutter Imaging 29<sup>th</sup> Street**

1020 29<sup>th</sup> Street, Suite 120  
Sacramento, Ca 95816  
T: 916.453.999 F: 916.784.2670

Patient Name: \_\_\_\_\_  DOB: \_\_\_\_\_

Home Phone #: \_\_\_\_\_  Cell Phone #: \_\_\_\_\_

Insurance Carrier / Medical Group: \_\_\_\_\_  ID #: \_\_\_\_\_

Exam Requested: **FIVE VIEWS OF BOTH KNEES - Read Instructions and Duplicate Sample Images on Next Page**

Diagnosis: **DJD BILATERAL KNEE/KNEE PAIN**  ICD-10: **M17.9**

Provider Name: **STEPHEN M. HOWELL, M.D.**  Provider's Signature: Stephen M Howell MD

# Obtain five radiographs of both knees by scheduling a visit at an imaging center listed above or one that you prefer

Instruct the imaging technician to: 1) read these instructions, 2) perform the following five radiographs of both knees, and 3) print ALL FIVE images on a CD disc for you to hand carry to Dr Howell's office.

1. PA weight-bearing views of both knees in 30-45 degrees of flexion (Figure 1)
2. AP weight-bearing views of both knees in extension
3. Lateral view of left knee
4. Lateral view of right knee
5. Sunrise views of both knees

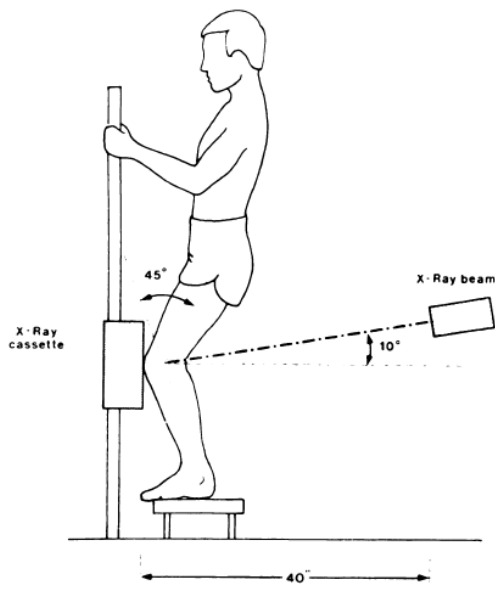
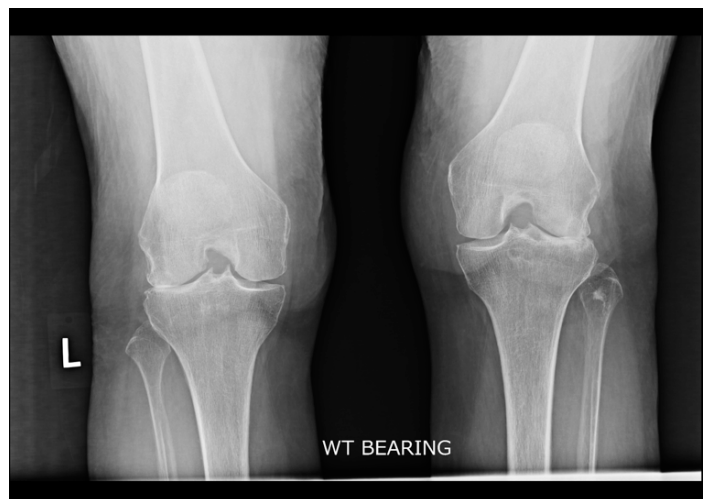


FIG. 1

Technique for making the 45-degree posteroanterior flexion weight-bearing radiograph. Note that the x-ray machine is forty inches (101.6 centimeters) from the cassette.



*An acceptable weight-bearing 45° flexed P/A view of both knees clearly shows the joint line of the knee, which requires superimposition of the anterior and posterior joint lines.*

## Obtain Lateral Views of BOTH Knees

